

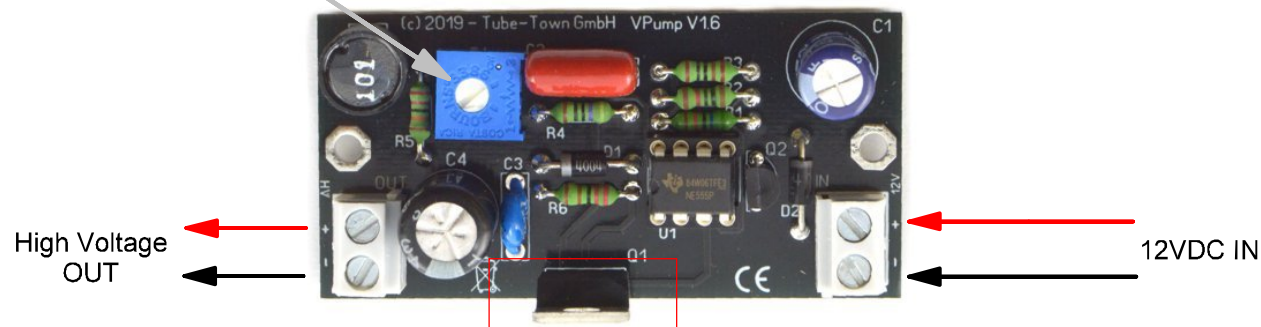
### Specifications

Input Voltage max	12 VDC @ min. 1 VA
Output Voltage	90 - max. 220 VDC
Maximum Current	15 mA @ 220 VDC

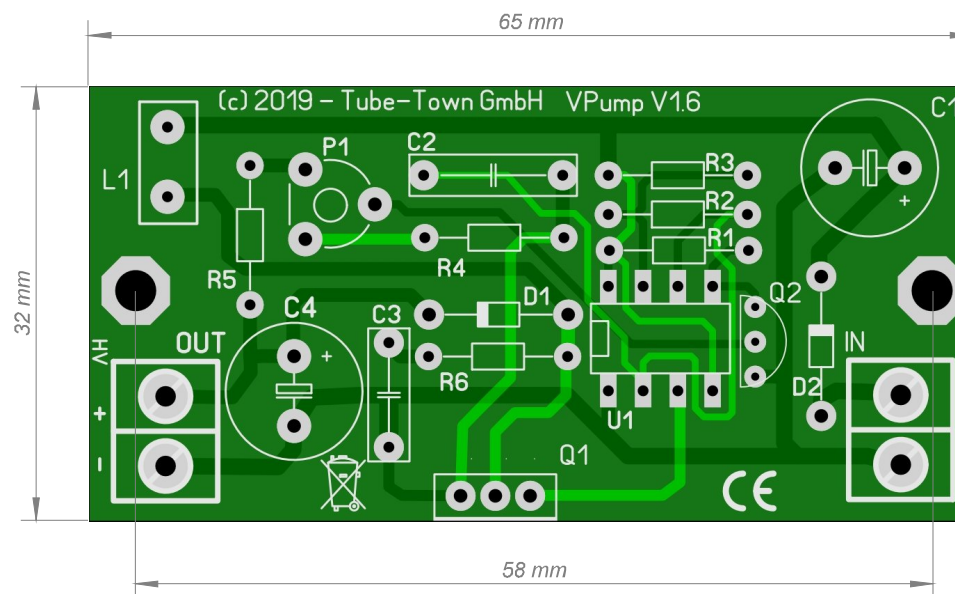
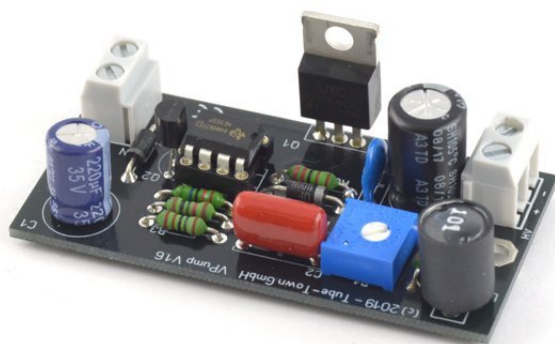
Ausgangsspannung einstellbar  
adjustable output voltage

### Partlist

R1	56 kOhm
R2	10 kOhm
R3	1 kOhm
R4	470 Ohm
R5	220 kOhm
R6	2,2 kOhm
P1	1 kOhm
C1	220 µF / 35 V
C2	2,2 nF
C3	100 pF / 1000 V
C4	4,7 µF / 350 V
L1	100 µH
D1	UF4004
D2	1N4007
Q1	IRF740
Q2	BC547B
U1	LMC555CN



IRF740 muss zur Signalmasse isoliert sein  
IRF740 must be isolated from signal ground



Änderungen		Datum	Name	Bezeichnung	Blattzahl:
Datum	Name	gez.:		TT-VPump Datasheet PCB Version 1.6	
		gepr.:			Blatt-Nr.:
				Zeichnungs-Nr.:	
				20200103	